

Standard cassette



Even larger surface of the air outlet

Air outlet surface in the latest version of the unit has been increased by 23%, providing lower airflow speed and quieter operation.

Optimised heat exchanger

Enlarged heat exchange area improves unit performance and airflow.

Functions

STANDARD

Available with wireless remote controller RG51A(2)/E



Wireless remote controller (RG51A(2)/E)



Hot start



Alarm port



Refrigerant leakage detection



Fresh air



Restoring the louver settings



Drain pump



Auto restart



Timer



Operation in low ambient temperatures



Emergency operation mode



Nawiew powietrza 360°



Economy operation



5 steps of fan speed regulation



TURBO function



Sleep mode



Standard filter



LED on/off



Remote switch



Clean function



Auto Swing



Short cut function



Heating 8°C

OPTIONAL



WiFi control



Wired remote controller



Central controller

Technical specifications

Set with white panel				ZMCD-24N8-C1	ZMCD-36N8-C1	ZMCD-36N8-C3	ZMCD-42N8-C1	ZMCD-42N8-C3	ZMCD-48N8-C3	ZMCD-55N8-C3	
Indoor unit				CSTB-24R32IVT IN	CSTB-36R32IVT IN	CSTB-36R32IVT IN	CSTB-42R32IVT IN	CSTB-42R32IVT IN	CSTB-48R32IVT IN	CSTB-55R32IVT IN	
Outdoor unit				UNVS-24R32INT OU	UNVS-36R32INTS OU	UNVS-36R32INTT OU	UNVS-42R32INTS OU	UNVS-42R32INTT OU	UNVS-48R32INT OU	UNVS-55R32INT OU	
White panel				T-MBQ4-04A1							
Indoor unit power supply (V/phase/Hz)				220-240/1/50	220-240/1/50	220-240/1/50	220-240/1/50	220-240/1/50	220-240/1/50	220-240/1/50	
Outdoor unit power supply (V/phase/Hz)				220-240/1/50	220-240/1/50	380-415/3/50	220-240/1/50	380-415/3/50	380-415/3/50	380-415/3/50	
Version				Reversible heat pump							
Cooling	Capacity	Rated	kW	7.03	10.55	10.55	12.0	12.0	14.1	15.2	
		Min-Max	kW	3.30-7.91	2.70-11.43	2.70-11.43	2.93-12.31	2.93-12.31	3.52-15.83	4.10-16.71	
	Rated input power		kW	2.32	3.95	4.00	4.20	4.30	4.65	5.00	
	EER		kW/kW	3.03	2.67	2.64	2.86	2.79	3.03	3.05	
ErP energy class			A++	A++	A++	A++	A++	A++	A++	A++	
Heating	Capacity	Rated	kW	7.62	11.14	11.14	13.48	13.48	16.1	18.17	
		Min-Max	kW	2.81-8.94	2.78-12.30	2.78-12.66	3.37-14.07	3.37-14.07	4.10-17.29	4.4-19.93	
	Rated input power		kW	1.90	3.00	3.00	3.00	3.70	4.58	5.55	
	COP		kW/kW	4.01	3.71	3.71	3.64	3.64	3.52	3.27	
ErP energy class			A+	A+	A	A+	A	A+	A+		
Maximum input current			A	13.5	21.5	10.0	21.5	12.0	11.2	14.0	
Indoor unit	Dimensions (width x depth x height)		mm	830×830×205	830×830×245	830×830×245	830×830×287	830×830×287	830×830×287	830×830×287	
	Transport dimensions (width x depth x height)		mm	910×910×250	910×910×290	910×910×290	910×910×330	910×910×330	910×910×330	910×910×330	
	Weight (net/gross)		kg	21.6/25.4	27.2/31.2	27.2/31.2	29.3/33.5	29.3/33.5	29.3/33.5	29.3/33.5	
	Airflow (low/medium/high)		m ³ /min	16.6/19/21.6	23/25.8/28.3	23/25.8/28.3	26.7/29.2/31.7	26.7/29.2/31.7	26.3/29.6/32.8	27.5/30.8/33.3	
	Sound pressure level (quiet/low/medium/high)		dB(A)	27/39.5/42.5/45.5	39/44.5/47.5/50	39/44.5/47.5/50	38/46/48.5/51	38/46/48.5/51	37.5/46.5/48.65/51	40/48/50.5/53	
Panel	Dimensions (width x depth x height)		mm	950×950×55	950×950×55	950×950×55	950×950×55	950×950×55	950×950×55	950×950×55	
	Transport dimensions (width x depth x height)		mm	1035×1035×90	1035×1035×90	1035×1035×90	1035×1035×90	1035×1035×90	1035×1035×90	1035×1035×90	
	Weight (net/gross)		kg	6/9	6/9	6/9	6/9	6/9	6/9	6/9	
Outdoor unit	Dimensions (width x depth x height)		mm	890×342×673	946×410×810	946×410×810	946×410×810	946×410×810	952×415×1333	952×415×1333	
	Transport dimensions (width x depth x height)		mm	955×398×740	1090×500×885	1090×500×885	1090×500×885	1090×500×885	1095×495×1480	1095×495×1480	
	Weight (net/gross)		kg	43.9/46.9	66.9/71.5	80.5/85	71/75	80.5/85	103.7/118.3	107.0/121.2	
	Airflow		m ³ /min	58.3	66.7	66.7	66.7	66.7	125.0	125.0	
	Sound pressure level		dB(A)	60	63	63	63	63	64	64	
Refrigerant	Type			R32	R32	R32	R32	R32	R32	R32	
	Charged amount		kg	1.50	2.40	2.40	2.80	2.80	2.90	3.00	
	Liquid/gas		mm	Ø9.52 / Ø15.9	Ø9.52 / Ø15.9	Ø9.52 / Ø15.9	Ø9.52 / Ø15.9	Ø9.52 / Ø15.9	Ø9.52 / Ø15.9	Ø9.52 / Ø15.9	
Refrigerant installation	Maximum length		m	50	75	75	75	75	75	75	
	Maximum height difference		m	25	30	30	30	30	30	30	
Condensate drain			mm	Ø32	Ø32	Ø32	Ø32	Ø32	Ø32	Ø32	
Recommended electrical wiring and protections	Outdoor unit power supply cord		mm ²	3×2.5	3×4.0	5×2.5	3×4.0	5×2.5	5×2.5	5×2.5	
	Communication cable		mm ²	4×1.0							
	Fuse		A	20	40	20	40	20	25	25	
Recommended operating temperature ranges (outdoor)			Cooling	°C				-15 ~ 50			
			Heating	°C				-15 ~ 24			

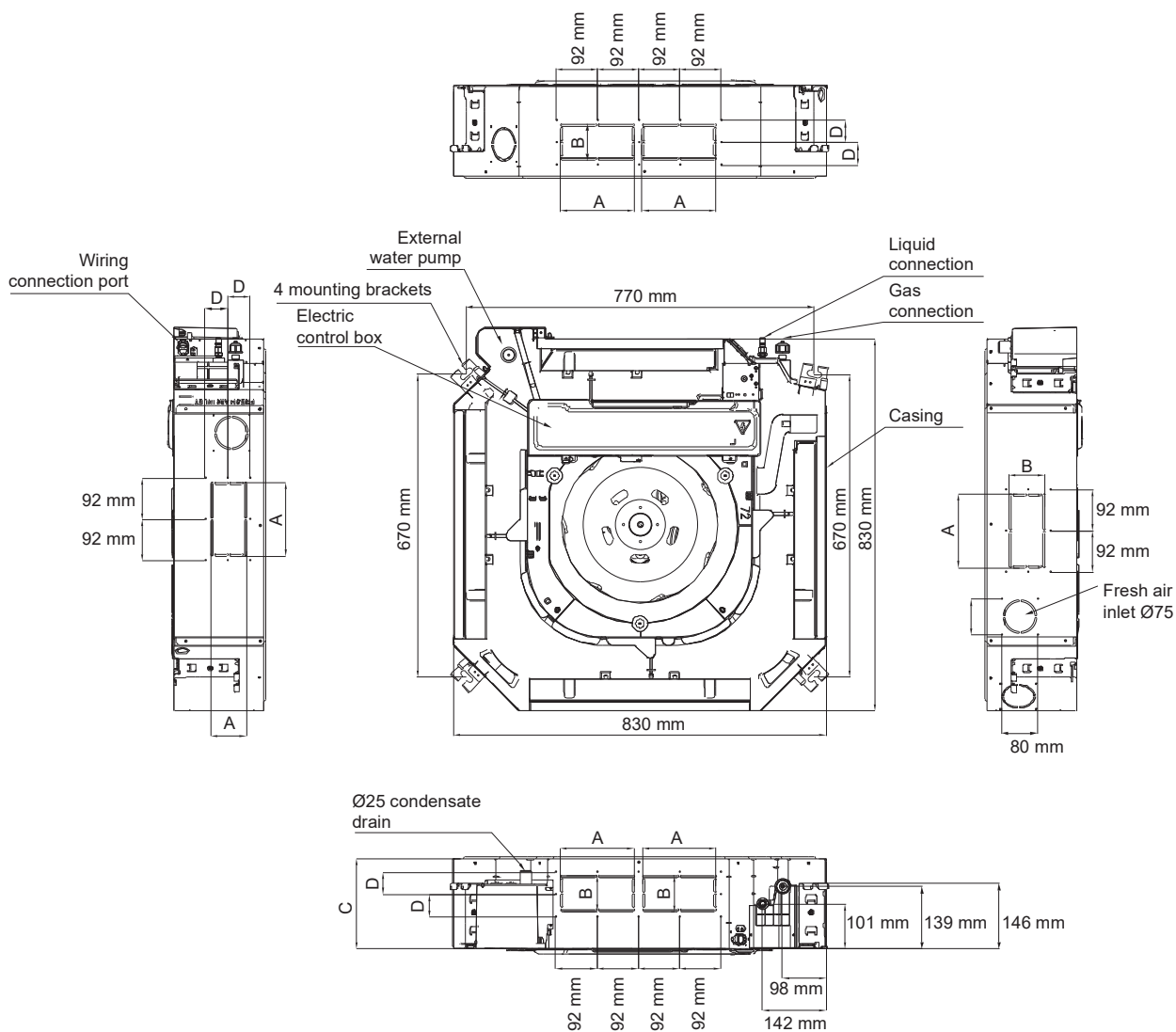
Capacity is based on the following conditions:

Cooling: indoor temperature 27°C DB/19°C WB; outdoor temperature 35°C DB/24°C WB. Heating: indoor temperature 20°C DB/15°C WB; outdoor temperature 7°C DB/6°C WB. Installation length: length of connected pipes is 75 m, the height difference is 0. The unit contains fluorinated greenhouse gases (R32 GWP=675). For the proper operation of outdoor units in the heat pump mode, it is necessary to apply a drain pan heater or provide smooth condensate drain in another manner. Choice of the appropriate solution is a matter for installer.

Accessories

Standard	
RG51A(2)/E	Wireless remote controller
Option	
KJR-120C1	Individual advanced wired remote controller with weekly schedule
KJR-150A	Group remote controller
CCM-180A/WS	Central controller with touch screen and schedule
CCM-30	Basic central controller
CCM-15	Central controller without display. Allows to control from a computer.
WIFI WF-60A1	It allows to control from a Smartphone with NetHome Plus application.

Indoor units



Model (kBtu/h)	Unit	A	B	C	D
24	mm	165	80	204	50
30-36	mm	165	100	245	60
42-60	mm	165	100	287	60

